

*In use for over
45 years!*

Rodent Equipment

Broome Style Restrainers

This is perhaps the most effective style available for three basic reasons;

1. Ease of use and access to the rodent.
2. Prevention of the animal's ability to turn.
3. Safety for the animal handler.

Flat Bottom Restrainers

These convenient restrainers have been a research standard for over forty years. The adjustable tail stock can be inserted into any one of four positions. Apertures in the top and bottom provide easy access for injections or sampling. The pocket and holes in the front make it easy to anesthetize or feed the animal. Refer to page 23.

Rodent Injection Cone

This device is relatively new on the research scene. It is extremely useful for large quantity sampling where high speed and efficiency are required. It is completely transparent, durable, and easy to clean, suction cup feet offer a secure work device. Refer to page 23.

See Also:

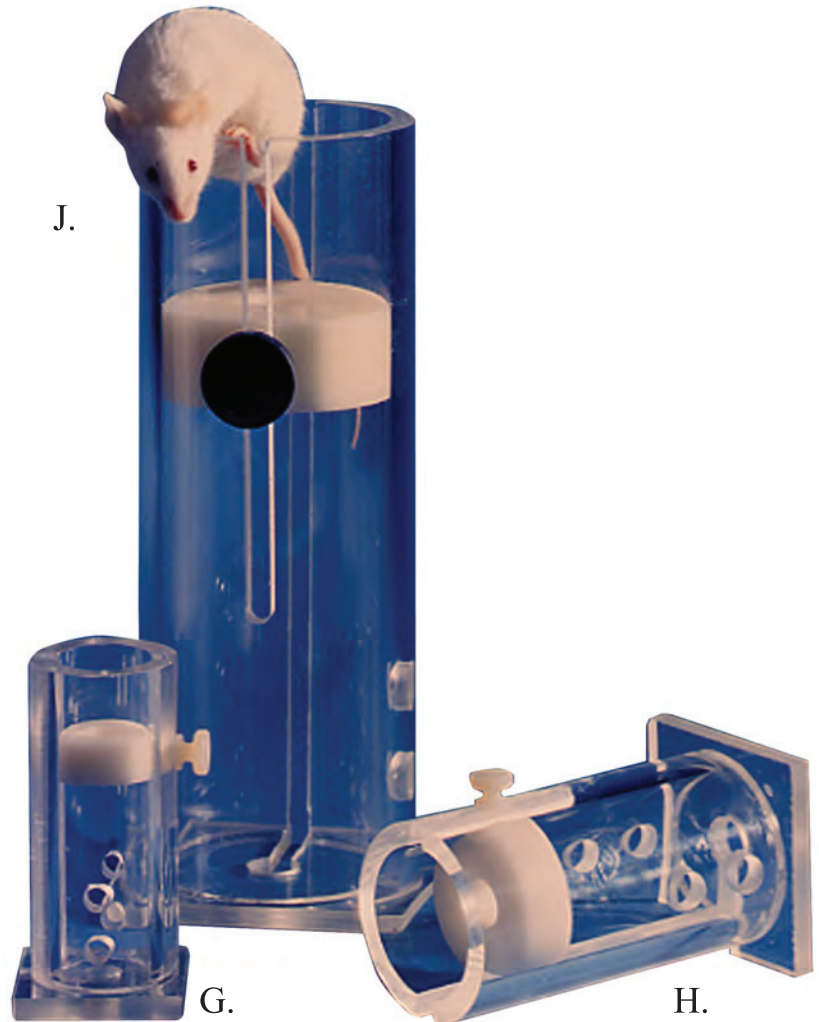
562-IRC, Illuminated Tail Injection Cone on page 25

Surgery Boards

Plas Labs surgery boards are formed of one piece high-temp Noryl™ for durability and ease of cleaning. Five adjustable Nylon cords are included. (Refer also to Page 19)

*“Slip Into Something
Comfortable!”*

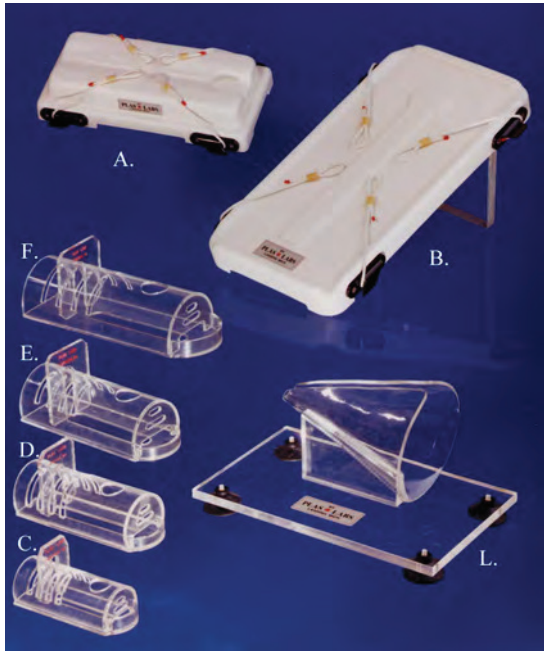
J.



550-Series Broome Style Restrainers

Also, refer to our new illuminated rodent cone, part number 562-IRC, on page 25





Rodent Equipment

Photo Key	Model Number	Item	Product Size	Animal Range
A.	508-MS	Surgery Board	4.5 x 11"	up to 9" long
B.	510-SS	Surgery Board	8.125 x 16"	up to 12" long
C. D. E. F.	541-RR 542-RR 543-RR 544-RR	Flat Bottom Rodent Restrainer	1.5" diam. x 3.75" 2" diam. x 5" 2.5" diam. x 6" 3.25" diam. x 8"	15 to 30 g 30 to 125 g 125 to 250 g 250 to 500 g
G. H. I. J. K.	551-BSRR 552-BSRR 553-BSRR 554-BSRR 555-BSRR	Broome Style Rodent Restrainer	1" diam. x 3.75" 1.5" diam. x 5.5" 2" diam. x 8" 2.5" diam. x 8.5" 3.5" diam. x 9"	15 to 30 g 30 to 125 g 125 to 250 g 250 to 500 g 500 to 800 g
L.	561-RC	Injection Cone	5.75" long x 5" high x 4" opening	Mice: 15 to 30 g Rats: 500 to 600 g

All rodent restrainers are manufactured from clear materials to provide complete visual awareness of the state of your animal. We offer two styles of restrainers in four convenient sizes.

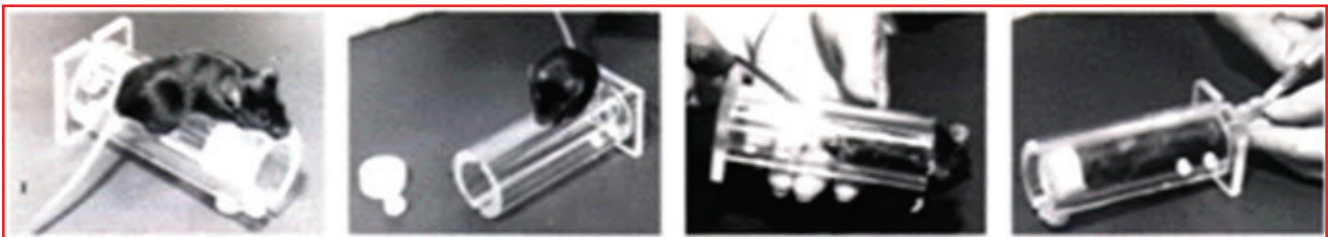
A special Broome Style unit for obesity studies, The Zucker Unit, is also offered. Catalog # 555-BSRR (Not illustrated).

Insertion Sequence

To place the animal in the Broome Style Restrainer, loosen and remove the nose piece and grasp the animal by the tail. Slide the animal's tail along the longer open groove until the animal is completely in the cylinder. Slide the nose piece into the short groove on the opposite side of the restrainer and place it up to the nose of the animal to ensure a snug fit.

This restrainer is perfect for injections or blood sampling.

Also, refer to our new illuminated rodent cone, part number 562-IRC, on page 25



550-Series Insertion Sequence