

# C5 Plus Vet

## Portable Color Doppler Ultrasound System

C5 Plus Vet is a portable veterinary color doppler ultrasound with superior image performance and diverse applications. Based on the advanced imaging technology and ergonomic design, it is equipped with superior image quality, comprehensive functions, high cost effectiveness and mobility, which make it applicable to scans of different animals, such as, farm animals, pets, etc. With this machine, we are capable to provide very comprehensive imaging system solutions.

### Comprehensive Clinical Applications

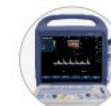
- Advanced imaging technology and superior image quality can provide fast and precise scans
- Applicable to scans of equine, bovine, ovine, swine, feline, canine, etc
- Applicable to different diagnosis of abdomen, obstetrics, cardiology, small parts, vascular, tendon, etc
- Powerful measurement software can provide comprehensive diagnostic bases

### Ergonomic Design

Smart new shape, compact size and light weight for enhanced mobility that allow C5Plus Vet to perform anywhere, any time.



Built in workstation



15" LCD



Efficient workflow



Built-in battery



Various I/O ports



### Comprehensive Probe Options



Micro convex probe  
5.0-H9.0MHz: 6C15C  
2.5-H6MHz: 3C20C



Linear probe  
6.5-H10.0MHz: 7L4C  
5.0-H11.0MHz: 8L4C  
8.5-H14.5MHz: 10L25C



Intrarectal linear probe  
4.5-H9.0MHz: 6I7C



Convex probe  
2.5-H6.0MHz: 3C6C

### Clinical Images

