



# Small Animal Anesthesia Systems



*EZ-FF9000 system offers fixed flow rates, making it the safest and easiest to use system.*

The safety of laboratory personnel is of primary importance. So, WPI's anesthesia system offers a choice of three breathing devices, all with a patented valve that mitigates the gas flow to the snugly-fitted nosecone. A highly sensitive valve regulated by the animal's breathing works with the nosecone to ensure non-rebreathing efficiency and allow safe anesthesia for up to 12 hours.

In addition, an activated charcoal air filter canister at the top of the induction chamber releases safe, filtered, exhaust air back into the room. The **EZ-FF9000** even includes a push button oxygen flush to safely eliminate the isoflurane from the induction chamber before you open it.

This is the system of choice for anesthetizing small animals. Animals to be anesthetized are placed into the acrylic induction chamber, and the system delivers a precisely blended mixture of oxygen and isoflurane.



*Vaporizer for EZB800 single animal system.*



*Vaporizer for the EZ7000 Classic System*

A water-heated cage warmer or warming plate (**ATC1000**) is used to retain the animal body temperature while in the induction chamber. After the initial anesthetizing, the animal can be moved to the heated surgical water bed and positioned in the nosecone.

## Three Complete Systems

WPI offers three complete small animal anesthesia systems tailored for your needs:

- **EZ-FF9000**—The most advanced system is easy to use. The autoflow anesthesia system offers precise, consistent, preset flow rates for each of five outlet with no flow meter required. There are no variables to worry about.
- **EZ-7000**—With five manual outputs and two flow meters, the classic system is the upgraded version of the original anesthesia system that has been effectively used for more than ten years.
- **EZ-B800**—The single animal system is designed as an economical alternative when a simple, entry-level system is sufficient.

# Small Animal Anesthesia Systems

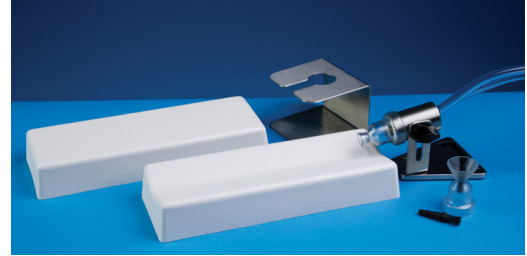


The **BioVac Chamber** option, a self-contained, laminar-flow system, virtually eliminates the release of isoflurane into the room.

## Features

All three systems include the **EZ-103A** Microflex Breathing Device and **EZ-178** Mouse/Rat induction chamber. Just add an oxygen source and liquid isoflurane. All the required hardware and connections you need to get started are included.

- Turnkey solution
- Easy setup and operation
- 90% below OSHA Isoflurane limit (Safe for lab personnel)
- Inhalation anesthesia (quick induction, speedy recovery and minimal animal handling)
- Effective for neonates up to 5kg animals
- Simultaneous treatment of up to four subjects
- Heated surgical beds and induction chamber

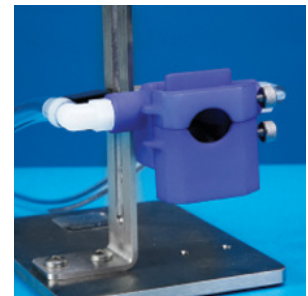


**EZ-103A** Microflex Non-Rebreathing Unit safely provides excellent anesthesia delivery to the subject.

## Breathing Devices

Three breathing devices are available to safely deliver anesthesia to the animal without releasing gas into the ambient air.

- **EZ-103A** Microflex Breather is designed for neonates to animals weighing up to 500g. Its low profile makes it an excellent choice for work under a microscope.
- **EZ104A** Versaflex Breather works well with animals up to 5kg.
- **EZ107A** Rat Stereotaxic Breather was designed to work with a standard stereotaxic frame, especially when working with rats.



Three breather options include the **EZ-103A** (left) for low profile applications like under a microscope, **EZ-104A** (middle) for neonates to 5kg and **EZ-107A** (right) for rats in a stereotaxic frame.



## WORLD PRECISION INSTRUMENTS

**USA:** International Trade Center, 175 Sarasota Center Boulevard, Sarasota FL 34240-9258 USA **Tel:** 941-371-1003 • **Fax:** 941-377-5428 • **E-mail:** wpi@wpiinc.com • **Internet:** www.wpiinc.com

**UK:** 1 Hunting Gate, Hitchin, Hertfordshire SG4 0TJ England • **Tel:** 44 (0)1462 424700 • **E-mail:** wpiuk@wpi-europe.com

**Germany:** Zossener Str. 55, 10961 Berlin, Germany • **Tel:** 030-6188845 • **Fax:** 030-6188670 • **E-mail:** wpide@wpi-europe.com

**China & Hong Kong:** Rm 29a, No8 Donfang Rd., Pudong District, Shanghai 200120 PRC • **Tel:** +86 688 85517 • **E-mail:** ChinaSales@china.wpiinc.com

**Brazil:** Conselheiro Nabias, 756 sala2611, Santos-Sao Paulo 11045-002 Brazil • **E-mail:** info@brazil.wpiinc.com