

POWTEQ®



Jaw Crusher JC5

◇ Jaw Crusher JC5

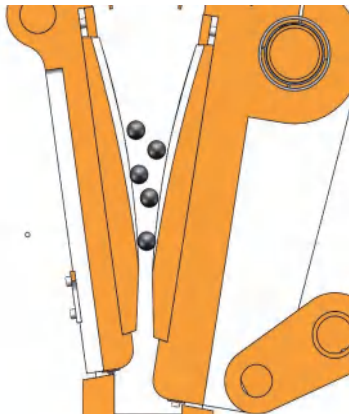
POWTEQ Jaw Crushers are used to process medium-hard, hard, brittle and tough sample fast and gently. There are 5 kinds of materials for the jaw plate. This series of products with superior technical and safety performance, so it is your ideal choice for the sample preparation in the laboratory and enterprise production.

○ Applications

- **Mining and metallurgical industries:** niobium and titanium alloy, vanadium iron, chrome vanadium, tungsten carbide, ore, coal, slag, coke
- **Chemical products:** wide variety of chemical industry raw materials
- **Geological and mineralogical:** rock, granite, basalt, barite, silicate
- **Ceramic industry:** talc, sintered clay, sintering ceramic, electric ceramic
- **Building materials:** bauxite, slag brick, quartz, cement



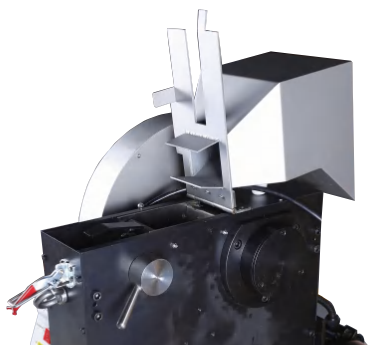
JC5



○ Working principle

The sample enters the grinding chamber via the anti-splashing hopper. The crushing is proceeded inside the wedge-shaped shaft space between two jaw plates. one jaw plate is fixed, while the other jaw plate is driven by a bent axle to perform oval movement with the continuous rotation of the motor. The sample is crushed due to extrusion caused by constant movements of the jaw plate and moves downward under the effect of gravity. In case the grain size of the sample is less than the lower opening gap of jaw plates, it will fall to the drawer receiver at the lower part of the machine.

○ JC5 Technical advantages

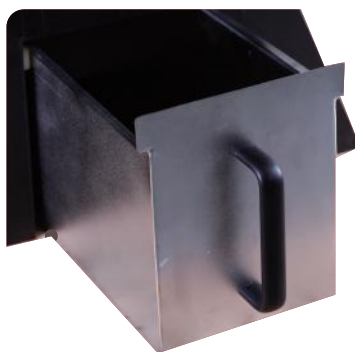


Comfortable operation and easy cleaning

The feed hopper of JC5 can roll over to one side or be removed easily. In this way, operators can clean the grinding chamber rapidly. The samples are collected in a drawer receiver and easy for the operator to proceed subsequent analysis.

High-safety design

The jaw crusher JC5 has high-level safety performance. The feed hopper can avoid scratching of operators touching the grinding chamber. The hopper baffle can prevent the rebound of samples from injuring persons. Furthermore, a safety switch is equipped at the upper of the feed hopper. The device cannot be started when the hopper is opened so as to guarantee the safety of operators. The motor and the controller also have overload protection devices; motor overload will occur when the load is too large (excessive sample loading or sample oversized). At this moment, such overload protection devices will automatically shut off the power supply to protect the motor and the crusher.



Eco-friendly design

We have equipped thoughtful dust - protection design for JC5 jaw crushers. In addition, in order to avoid environmental pollution caused by tiny dust particles, we equipped dust discharge connector for the crusher. Operators can easily remove the dust particles inside the crusher by connecting industrial dust collector with such dust discharge connector.

○ Technical data

JC5			
Feed size	<90mm	Zero point adjustment	Yes
Final fineness	<2mm	Rated power	2.2KW
Speed	305rpm	Power supply	380V,50Hz
Collector capacity	5L	Instrument size(W*D*H)	440*930*1090mm
Jaw plate width	99mm	Package size(W*D*H)	800*1180*1350mm
Gap setting	0~30mm	Weight	320kg