

Primate Chairs



517-CM

Did You Know?

The life span of an average Rhesus Macaque is 20 - 30 years?

Plas ■ Labs has been a leading manufacturer of primate chairs for over 45 years. All of our chairs have been developed, tested, and refined in some of the world's leading research facilities.

Each chair has been developed specifically for a particular species and its physiological structure.

Our chairs offer increased portability, speed of handling, and safety for both the handler and your valuable primate. A choice of two seat styles offers increased comfort in a more natural position for the primate.

These chairs are useful for acute or chronic studies. Rolling support carts enable the researcher to chair the animal in the housing area and safely move it to the lab.

Basic Features on All Chairs

- All surfaces that come in contact with the animal are tooled and highly polished to eliminate chafing and body lesions.
- All restraint plates are adjustable both horizontally and vertically.
- No tools are needed to adjust the chairs.
- Thoracic plates and waste pans are standard on each chair.
- Food bars allow for self-feeding and dietary rewards.
- Casters are anti-scuff with brakes and locks.
- Heavy gauge acrylic (optical quality) offers long run durability and total observation of your animal.
- Large hand knobs afford a good grip when hands are wet and slippery (safety factor).
- No assembly required.

We offer custom fabrication services to manufacture chairs of your own design.

Refer also to our Rotational Primate Chair on page 17.



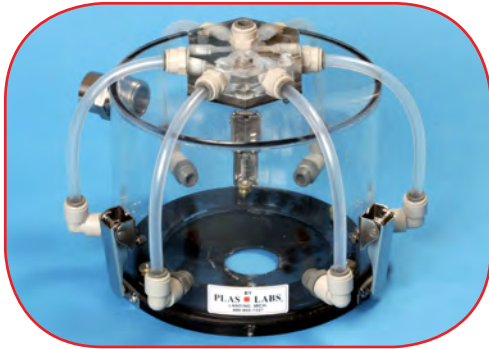
515-SASR

Swing-a-way seat model.



Primate chairs in typical production run.

500-K, Inhalation Helmets



Inhalation Helmets useful for the following Plas Labs' primate chairs:

- 514-AG
- 515-SASR
- 517-CYNO
- 518-RPC

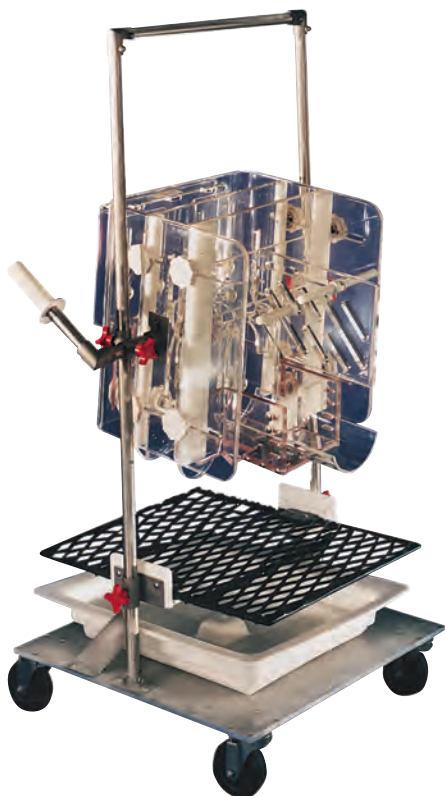
Primate Collar Adapter Plate



Table Top Primate Chair



Rotational Primate Chairs



Rotational Chair, 518-RPC



512-SPC

The next generation of primate chairs offers a diverse application for research capabilities. The restraining portion of the chair rotates a full 360° to position the primate for the individual researchers needs. The ergonomically correct back plate supports the primate in the full range of motion of the chair.

The chair is specifically designed for complete rotational studies of primates, eliminating awkward positions for the laboratory technician.

No tools are required for locking the chair at any angle, which enables the researcher to focus on the task at hand, as opposed to worrying about finding the proper tool to lock the chair into position.

Model Number	Primate Species	Weight Range	Package Includes	Available Accessories
511-SPT 512-SPC	Marmoset Common "Callithrix Jacchus"	500 g to 1 kilo	D	
511-SPT 512-SPC	Squirrel "Saimiri Sciureus"	500 g to 1 kilo	D	
514-AG	African Green "Cercopithecus Aethiops"	1.5 to 4 kilos	B	A, D, F, I, K
515-SASR 518-RPC	Rhesus "Macaca Mulatta"	2.5 to 8 kilos	B, C	A, D, F, I, K
517-CM	Cynomolgus "Macaca Fascicularis"	2.5 to 8 kilos	B, C	A, D, F, I, K
520-BS	Baboon "Papio-Papio"	39 to 61 kilos	B, H	A, H, K

Primate Chair Accessories

- A. 500-A, Watering "T" Bar with bottle holder
- B. 500-B, Adjustable Waste Pan
- C. 500-C, Urine Deflector
- D. 500-D, Table Top Leg Stand

- F. 500-F, Head Restraint Package
- H. 500-H, Safety Enclosure
- I. 500-I, Collar Adapter Accessory
- K. 500-K, Inhalation Helmet